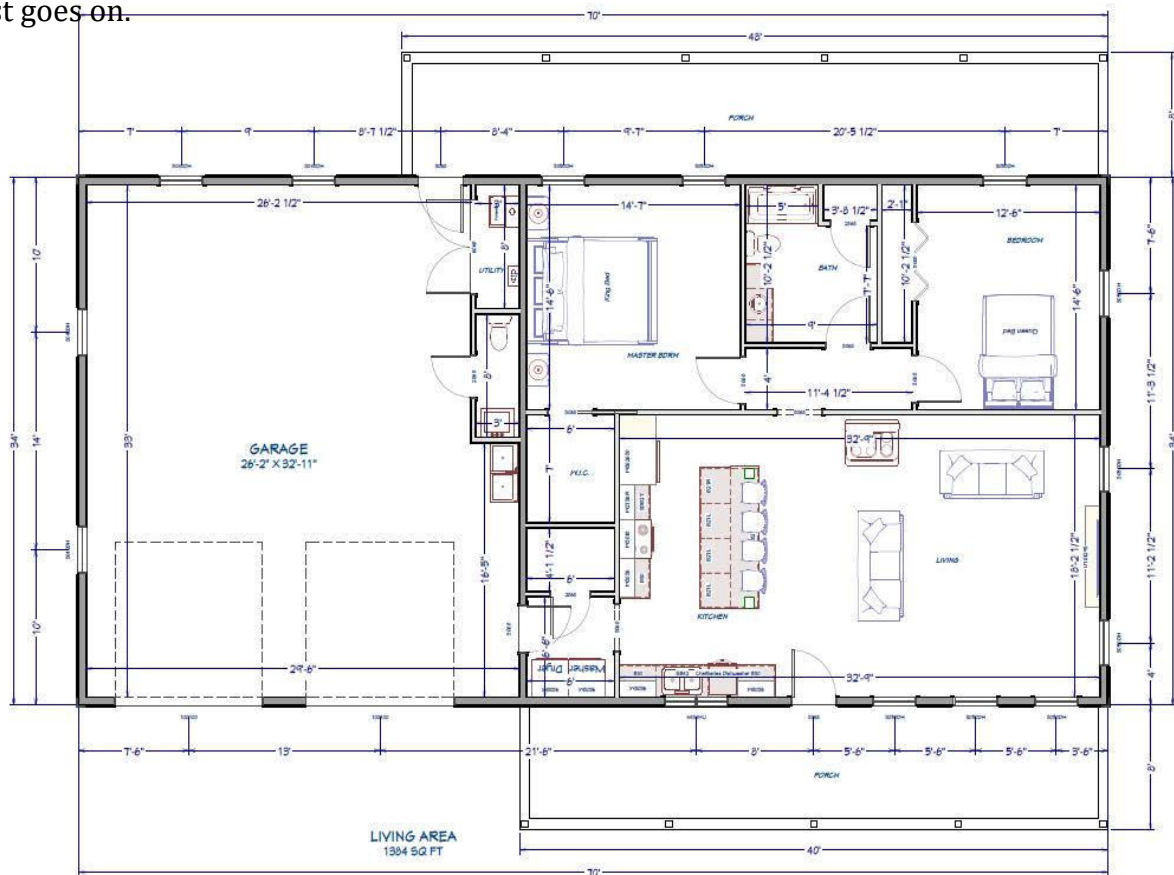


# GRABER POST BUILDING'S Residential Home Design

These designs are used for most residential structures where standard building codes apply, including but not limited to Barn-dominiums, PoleBarn Houses, Pool Houses, and many more.

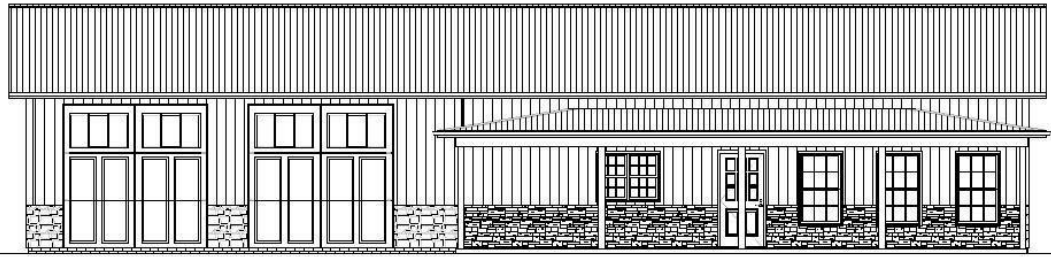
In this following document we are primarily focusing on the exterior structure features. Plumbing, HVAC, Electrical, Excavation, and possibly several other sub-contractors will need to be involved in the overall build process.

The biggest question of all is what size do you need? In order to simplify that question, begin with how many bedrooms do you need? How many bathrooms? How many car garage, or no garage at all? Size of the living room and kitchen? Bonus room? . and the list goes on.

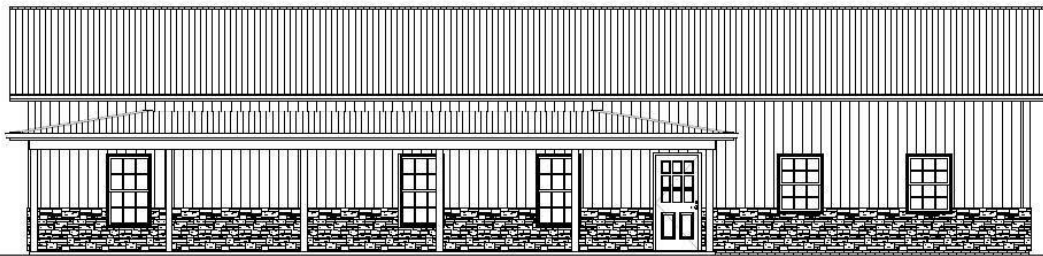


If you already have a floor plan to begin with, that's great. If not, we are happy to have you come in and sit down with one of our home designers to get a floor plan that you like. A professional floorplan will greatly reduce the stress of the homebuilding process.

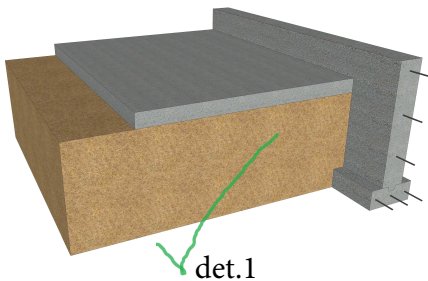
After we have a design just the way you like, we finalize a contract, order the materials, and the process will be underway.



Elevation 1



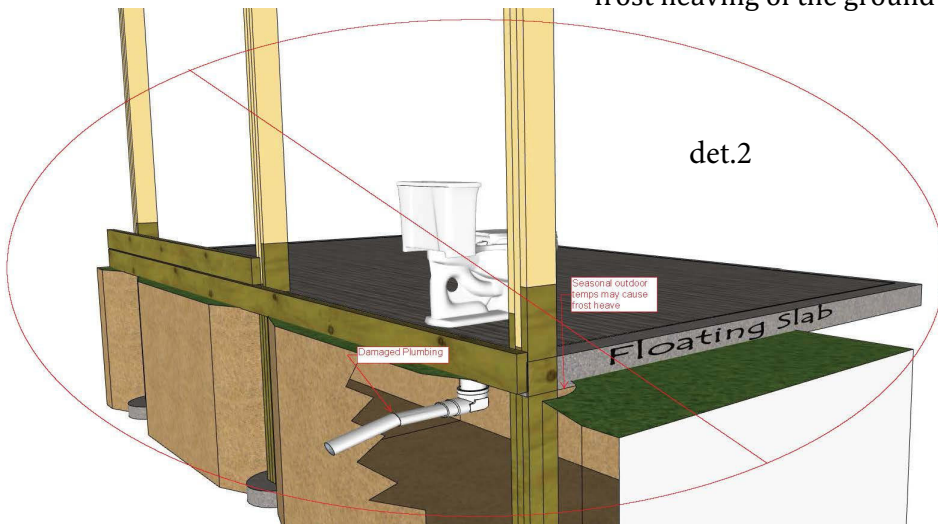
Elevation 2



det.1

Standard footings usually consist of concrete footings below the frost line with a short concrete stem wall on it for the framing to be secured to.

Most counties in our region will require a continuous footing as shown in det.1 to meet local building codes instead of simply post frame buried in the ground. When plumbing is installed in a floating slab, you can see below how it can get damaged from frost heaving of the ground without a proper footing. det.2

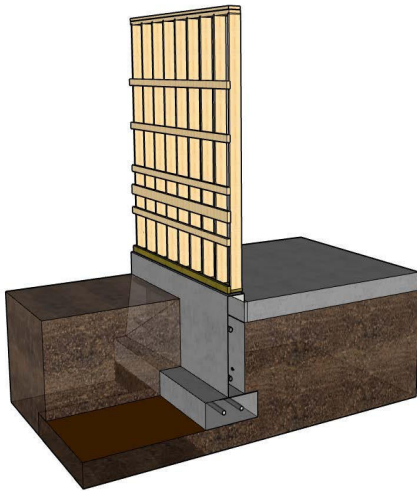


det.2

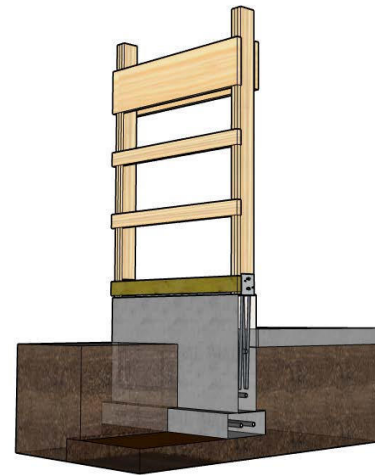


The wall framing is then attached to the foundation. As you can see on the 2 designs below, we have 1 row of treated skirtboards, 2x4 spruce wall girts spaced at 2' apart, on each wall. If you plan to finish the interior with drywall, stud frame (*left design*) is recommended. If you opt for a metal interior finish, the post and bracket sytem is sufficient (*right design*) see next page for more interior details

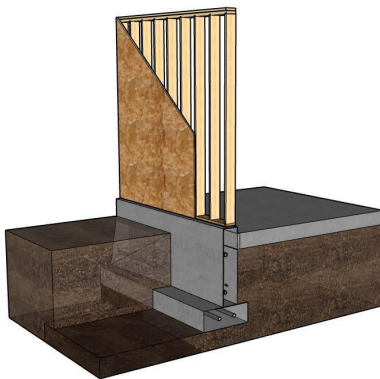
## Stud Frame



## Post Frame

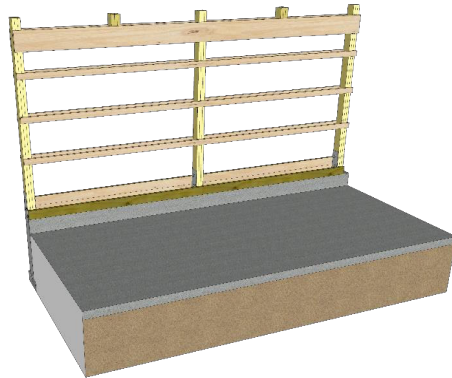


If you plan to use a lap siding on the exterior, it is required to have a solid sheathing to fasten to, therefore instead of using wall girts, we will install a 7/16" OSB.

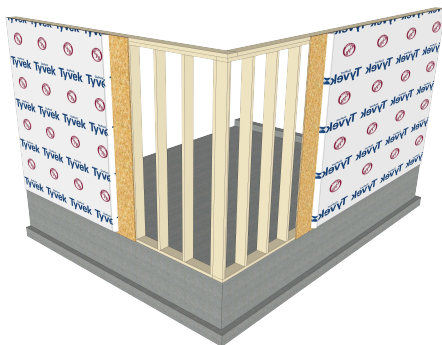


## GRABER POST BUILDING'S Residential Interior Finish Framing

When using our G-Rib or similar metal interior liner, 2x4 Spruce girts are added to the inside of the wall with a treated 2x4 at the bottom row. These will be spaced at 2' intervals, which makes it very convenient to fasten 24" wide rolled Kraft Faced batts before installing the liner material.

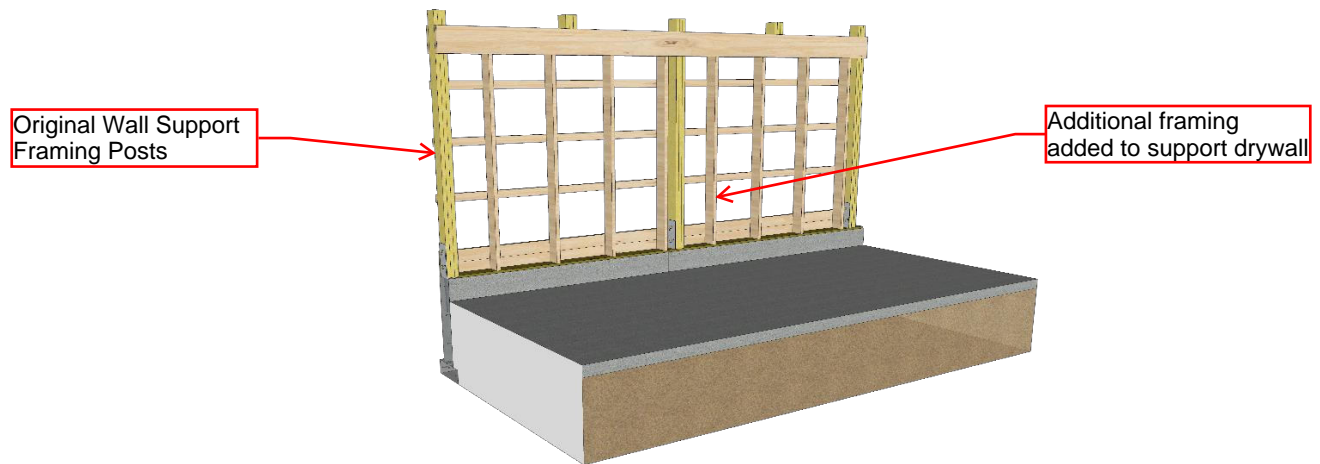


In cases where a 4x8 sheet interior liner product such as drywall or osb used, it makes more sense to use vertical studs instead of using posts at all. For drywall, 16" can be a better choice to prevent cracks in the finish. This method can be insulated in the same manner as stated above with batts.





If you are the Do-It-Yourself type you may prefer us to post frame the walls and turn the rest over to you. At that point you can add studs between the posts at 16" or 24" spacings depending on which liner product you plan to use.



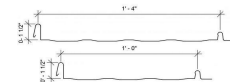
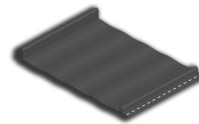
Always consider what type siding and roofing products or interior finish you plan to use when choosing your frame design.

For example, our G-Rib metal is very popular due to the overall cost of installing it. It is engineered to work with a more economical framing design than lap siding. It can be installed over wall girts at 2' apart. Lap siding on the other hand requires a solid sheet product as a backing such as OSB.

The same applies to the roof, G-Rib is self supporting when placed over roof purlins spaced at 2' apart. Standing seam or shingle would require a backing product such as OSB, which also requires trusses to be moved to 2' apart.



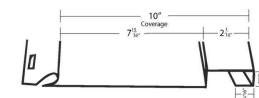
G-Rib



Standing Seam



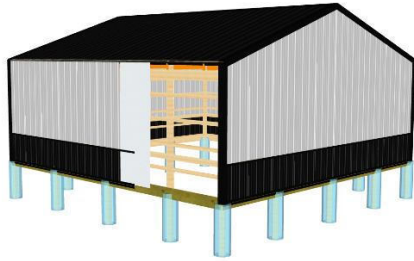
R-Rib



Board and Batten

# GRABER POST BUILDING'S

## Popular Siding Combinations



**G-Rib or R-Rib with Wainscote**



**ALL NEW - Metal Board Batten**



**Versetta Stone Wainscote**



**Affinity Stone Wainscote**



**K- Line Finished - LP 4x8 Strand**



**K- Line Finished - LP 8" Lap**



**Vinyl Siding From Provia**

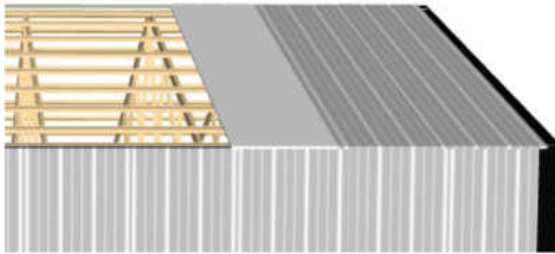


**Rough Sawn Lumber - Unfinished**

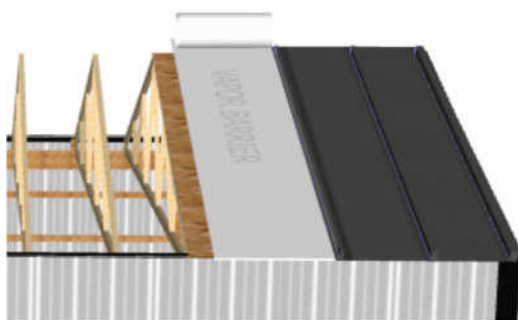
# GRABER POST BUILDING'S

## Types Of Roofing

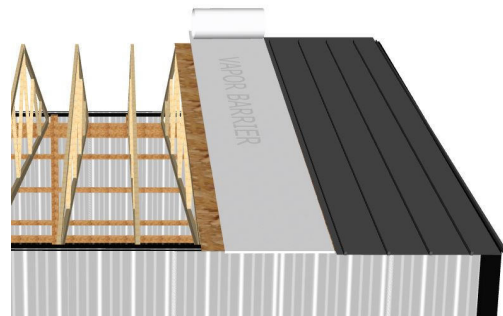
We install several different types of roofing on our projects but our G-Rib Profile 29 Ga. metal product, which has a 40 year paint warranty, is by far our most popular. Most of our homes have the G-rib or similar metal product due to the savings on install time, and framing procedures required with other products, that are not needed when using metal.



**G-Rib or R-Rib**  
(exposed fastener, installed over purlins or OSB)



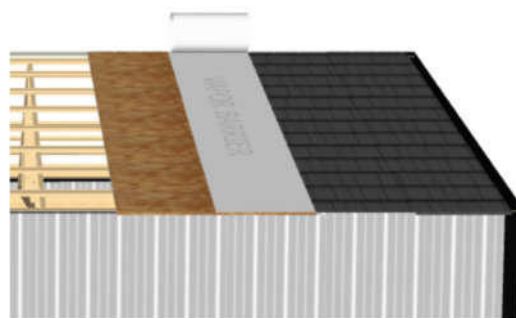
**Standing Seam 16" or 12"**  
(hidden fastener, installed over OSB)



**M-Rib**  
(exposed fastener, installed over purlins or OSB )

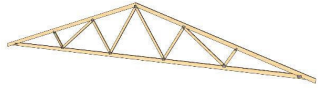


**Asphalt Shingle from Owens Corning**  
(hidden fasteners, installed over OSB)



**Metal Shingle from Boral**  
(hidden or exposed fasteners, installed over OSB))

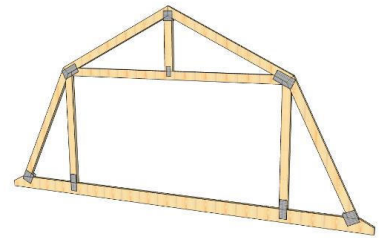
# GRABER POST BUILDING'S Truss Styles



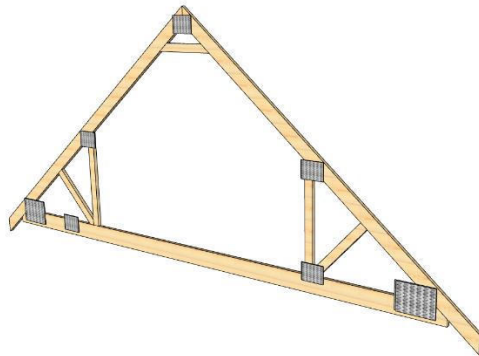
**Standard Pitch**



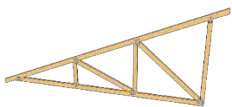
**Scissor (cathedral style)**



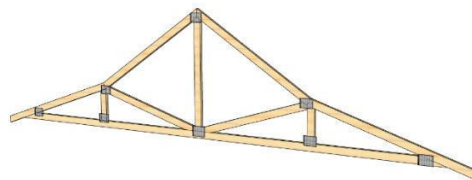
**Gambrel (attic)**



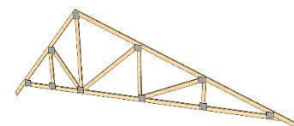
**Room-in-Attic** →



**Mono (shed roof)**



**Western**



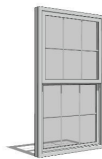
**Dual Pitch**



# GRABER POST BUILDING'S Windows

We offer several different window styles provided by  windows.

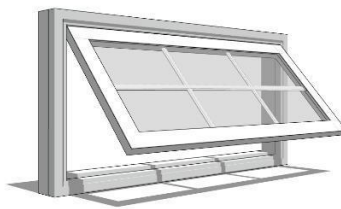
Many of our buildings include our vinyl horizontal slider or may even be upgraded to include grids as shown below. We stock several sizes of this style without grids. You may decide to go with a more residential style window and choose a double hung window. Again these may be with or without grids. We stock several of these models in white. Bronze or Black windows are becoming very popular recently with the "farmhouse" look. They are available as special order.



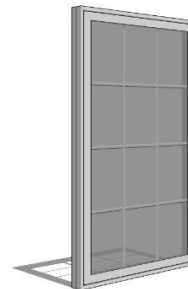
Casement windows that can be opened similar to a door. Awning style windows, which are similar to a casement, but are set horizontally. Fixed windows may be used in some applications such as bathrooms above a shower, or office areas.



**Casement**



**Awning**



**Fixed**

# GRABER POST BUILDING'S Entry Doors

Many of our buildings include Entry Doors from



We stock several 1700 and 1900 series models primarily in 36" width. The flush white models are available as a 48" width and even a 72" double door that are usually in stock also.

## **1700-SERIES ENTRY DOORS - Model 1741**

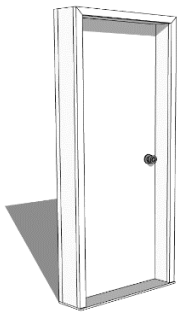
A general utility door for agricultural buildings, our 1700-Series doors have the features you need.

With a panel that is 1-3/4" thick, you can easily use standard door accessories. These pre-painted, pre-hung doors feature universal swing, rolled-edges, steel skin and a polyurethane core - it makes for a sturdy durable choice.

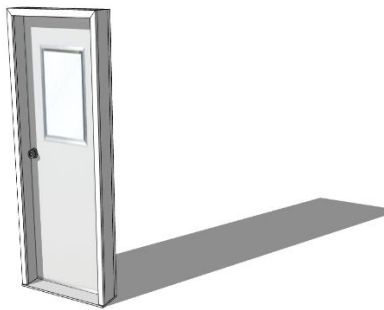
Or if you are looking for a little better option, we will use the

## **1900-SERIES ENTRY DOORS - Model 1920**

The 1900-Series doors cover all bets for agriculture, commercial and metal building projects. Its 24-gauge skin and 16-gauge steel jamb offer durable security -- while the wide variety of panel embossment options provide appealing matches to interior door choices.



**Flush White Model**



**20x24" glass window**



**9 Lite Glass model**



We offer residential Entry Doors from



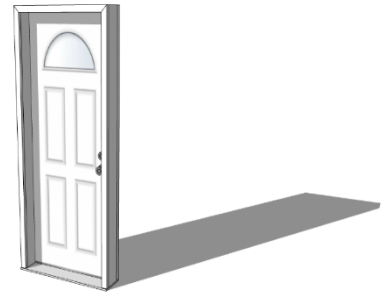
There several different fiberglass models in stock in white. If you need a custom color, that is not a problem, we can have the door pre-finished locally with a premium paint.




**6 Panel Primed White**



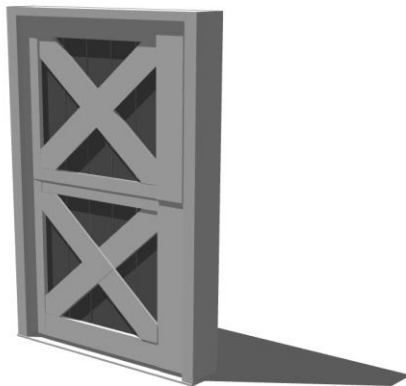
**9 Lite Fiberglass**



**Custom styles to order**

If you need an Entry Door for your barn or maybe just like the rustic look on your garage, you might choose one of our doors from 

The Silvercraft XL Dutch Doors are constructed with a 2"x3" .125 aluminum tube frame door, and all welded corners. The complete frame is sanded and powder coated, leaving a flat seamless finish. The door jamb is .125 aluminum with a weld-on 6" aluminum bullet hinges with ½" stainless steel pin. A bumper seal on the jamb provides a tighter seal and quiet operation. A 3" barrel bolt allows the door to operate separate, or as one. A heavy door latch and all necessary mounting hardware is included. Upgrades on this model can include Arch Top, Double Buckboard, Glass Top with Grids, and Custom Sizes.



# GRABER POST BUILDING'S Sliding Doors

If you are looking for a premium sliding door for a garage area we recommend our door line from



Silvercraft doors can be upgraded to include an arched glass window or even brush seals for a more secure door. These models will come pre-assembled. We do not recommend sliding doors in insulated finished areas due to difficulty creating an air tight seal around the door. You could install them as a faux front over a glass patio door.



**Silvercraft Doors**



**GPB Custom Doors**





# GRABER POST BUILDING'S Overhead Doors

We offer several different overhead models provided by **C.H.I. OVERHEAD DOORS**

Here at Graber Post Buildings, we stock several sizes of the 2283 series model and a cheaper 2250 economy model that is non-insulated in white. Any other model that they design, we can order and have within a few weeks. If you'd like we can install an automatic opener also.

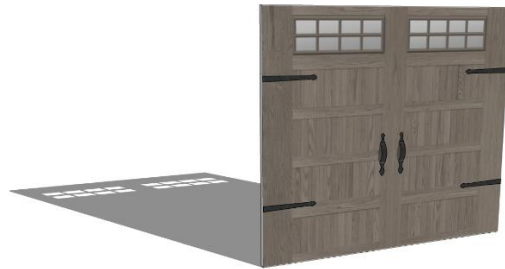
## 2283-SERIES OR 2250-SERIES OVERHEAD DOORS - (WINDOWS OPTIONAL)



Here are a few other popular styles they offer.



**5283 Series Carriage House**



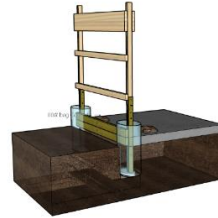
**5283 Series Carriage House in Wood ACCENTS**



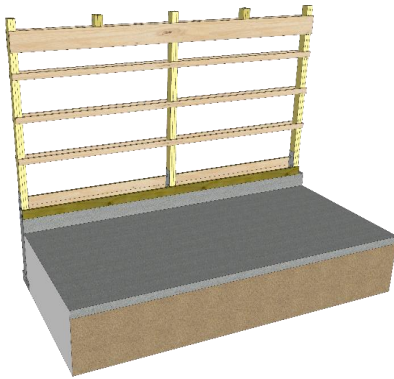
# GRABER POST BUILDING'S

## Post Frame Interior Finish Framing

If you plan to finish the interior of your barn and you will be using any of our post frame designs, or already have a barn and wish to finish it out, there are two popular techniques that can be used to do this.

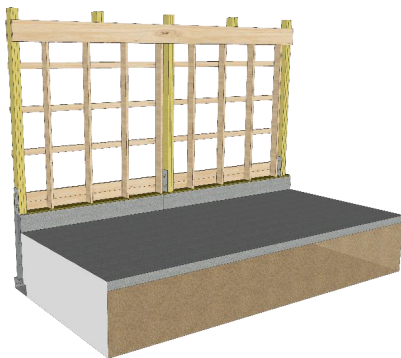


When using our G-Rib or similar metal liner, 2x4 Spruce girts are added to the inside of the wall with a treated 2x4 at the bottom row. These will be spaced at 2' intervals, which makes it very convenient to fasten 24" wide rolled Kraft Faced batts before installing the liner material.



In cases where a 4x8 sheet liner product such as drywall or osb used, it makes more sense to use vertical studs between the posts at 16" or 24" spacings depending on which product is used. For drywall, 16" can be a better choice to prevent cracks in the finish. This method can be insulated in the same manner as stated above with batts.

Metal Ceiling



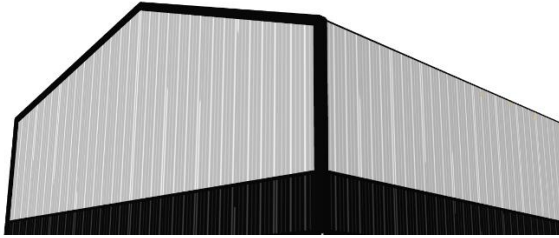
Drywall



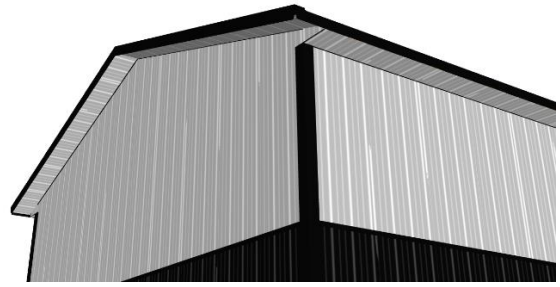
# GRABER POST BUILDING'S

## Roof Upgrades

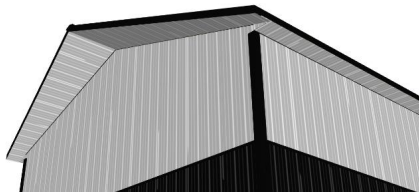
When it comes to roof styles, we start with a 4/12 pitch flush roof and then upgrade from there. Overhangs can be partially or fully vented if you'd like. Usually if you decide to add guttering at any time, it is recommended to have at least 1' Overhang for a solid area to mount guttering.



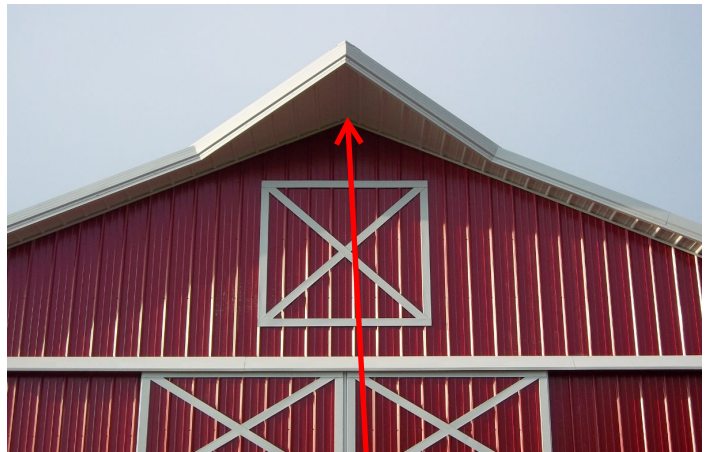
Flush Roof – No Overhang



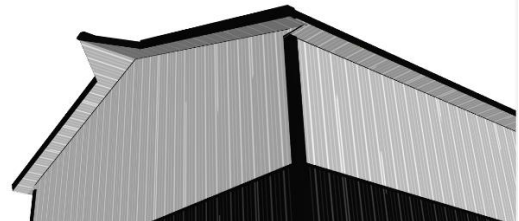
12", 16" or 24" overhang (vented or non-vented)



Flying Gable

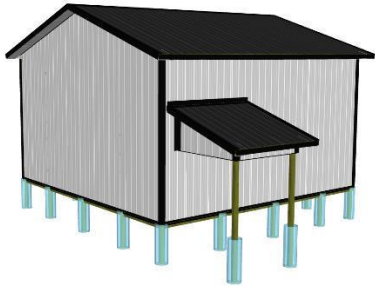


Additional Eyebrows (up to 6' deep)

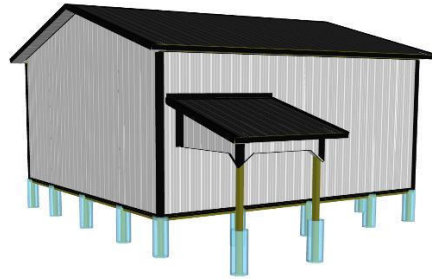


Barn Peak

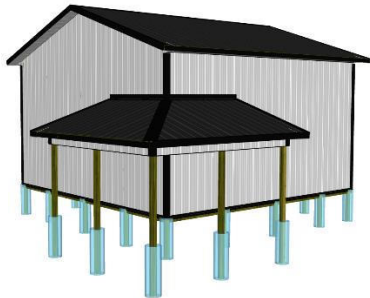
# GRABER POST BUILDING'S Porch Designs



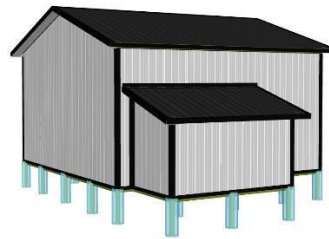
**Open Lean-To Porch**



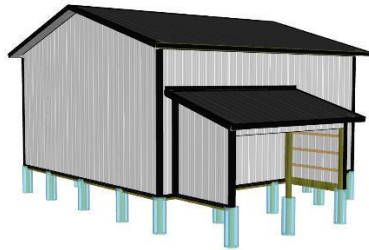
**Open Lean-To Porch with upgraded V-Bracing**



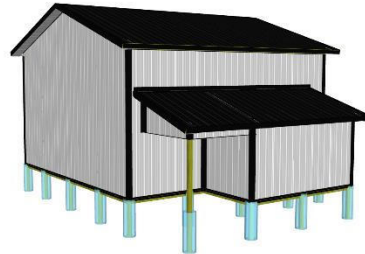
**Open Wrap-Around Porch**



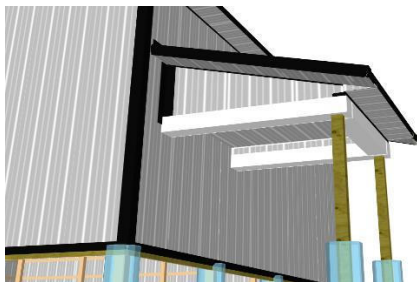
**Enclosed Lean-To**



**Lean-To with Eaves Open**



**Enclosed Lean-To with Porch Area**



**Porch with Treated Posts**



**Porch with Metal Post Wrap**



# GRABER POST BUILDING'S Building Upgrades

We offer cupola kits from



Our most popular would be the model with the louvered sides. These cupolas can be vented if you would like but usually are only used for aesthetic purposes. The windows on the sides are also available as an upgrade. Sizes available include: 24" x 24", 36" x 36", 48" x 48", 66" x 66". Our kits include a weathervane as standard.



24"

**Stock Weathervanes**  
30"



Country Doctor



Eagle



Horse



Rooster



Antique Auto



Country Doctor



Duck



Horse



Pig



Rooster



Tractor



Sailboat



Buck



Cow



Eagle



Pheasant

46"



Eagle



Horse



Rooster



Sailboat

**30" Non-Stock Weathervanes**

Please note, Non-Stock Weathervanes will only be offered in a black finish as of April 30, 2020.



Airplane



Antique Auto



Bear



Blue Heron



Buck



Cardinal



Cat



Country Doctor



Cow



Deer in Pines



Duck



Eagle



Elk



Fire Wagon



German Shepherd



Golden Retriever



Golfer



Horse



Hummingbird



Lab



Liberty Flag



Lighthouse



Loon



Mare & Colt



Moose



Motorcycle



Pheasant



Pig



Rooster



Sailboat



Schooner



Spear



Tractor



Train



Trout