

New Home Plans For:

Outside Shell Only
Turn-Key Price



NOTES



“The Wren”

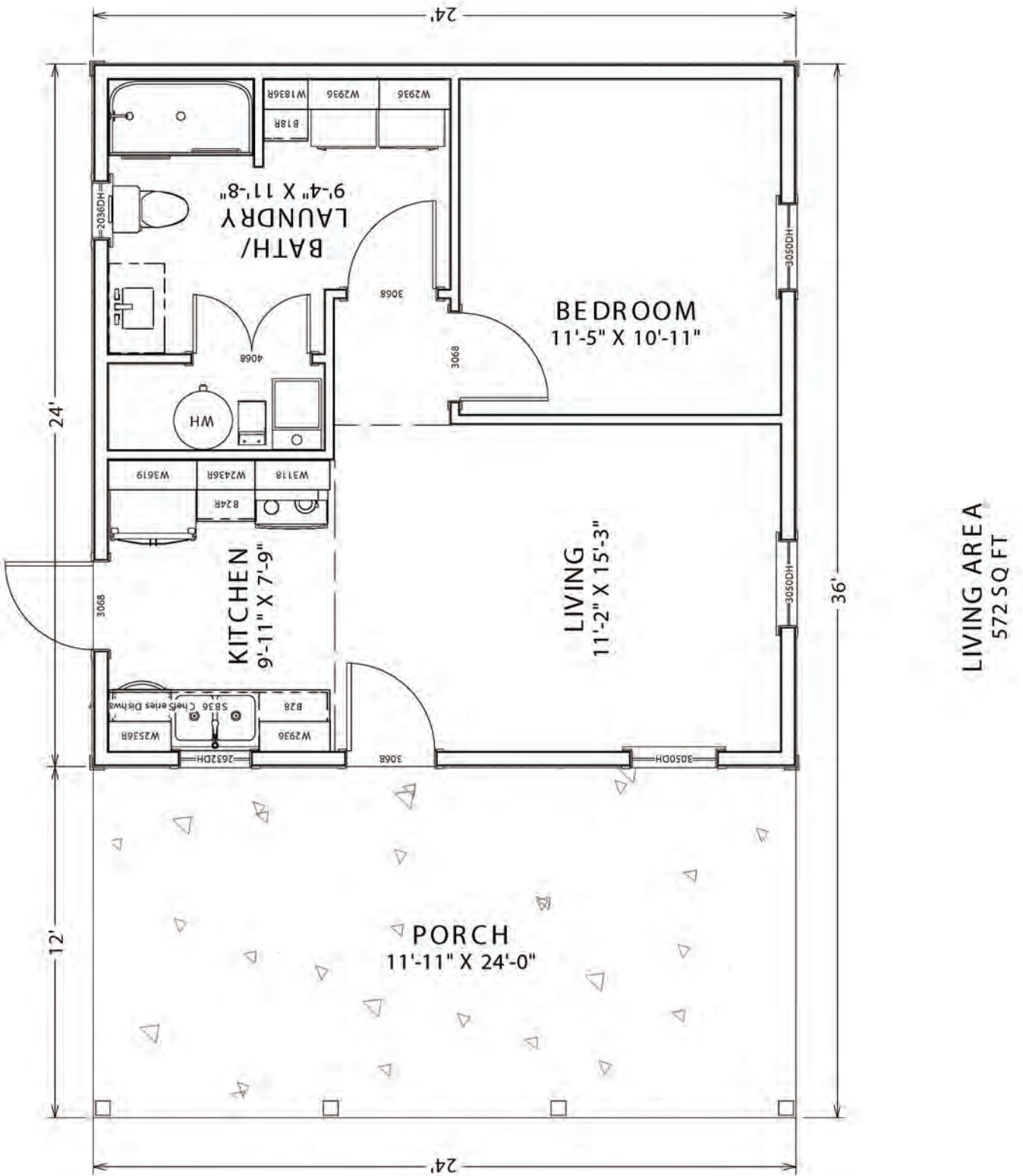
572 sq ft | 1 Bed | 1Bath

24' x 36' Footprint | 12' x 24' Carport/Porch

Base Starting Price: \$40,000
Turn-key Base Price: \$107,000 (subject to availability)



Building Layout



www.graberpost.com

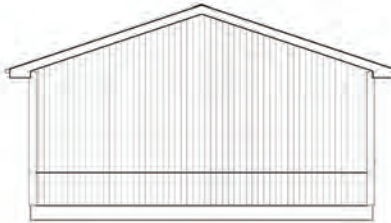
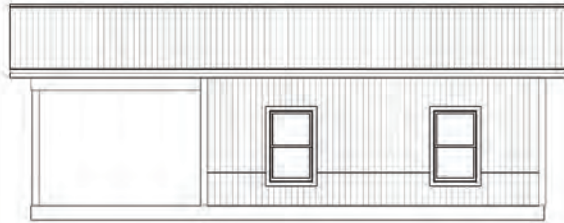
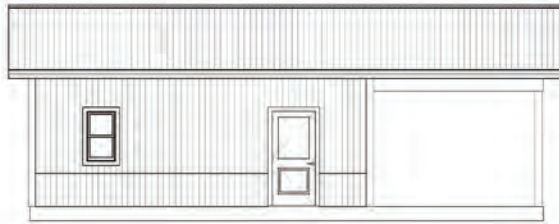
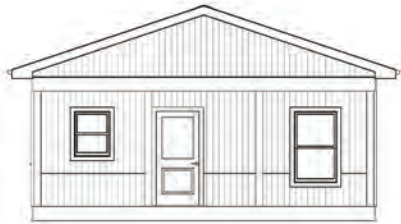
Interior Design



800-264-5013

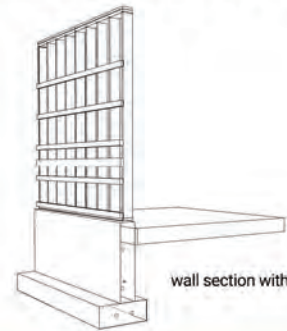


Turn these plans into your own!



Feel free to customize the plan if it's not exactly what you would like. Our in-house designers have these plans on file and can easily and efficiently customize them to your specs.

Our residential homes are built standard with a concrete footing and conventional stud framing to assure no issues meeting building codes and providing you with peace of mind for many years to come.



wall section with footing detail

Quality products from start to finish

This specific home design was completed using our elite "GPB" standard products, from the industry leading 40-year warranty painted roofing/siding panels that we roll-form and cut to length in our manufacturing facility. We offer high quality C.H.I. insulated overhead doors, and windows that are produced by Pella, both well known companies in the building industry. We offer several stock model entry doors from Therma-Tru that can be custom painted or we can special order specific models to suit your needs.

AkzoNobel



THERMA-TRU
DOORS

C.H.I.
OVERHEAD DOORS

LP SmartSide
TRIM & SIDING




NFBA MEMBER



www.graberpost.com

800-264-5013